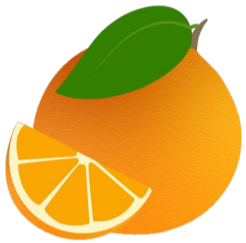
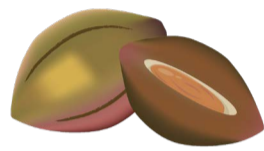


FRUITS

FRUITS (1)



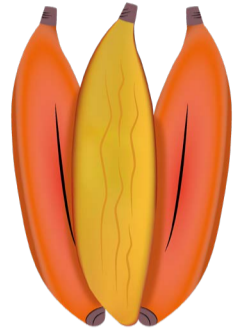
ORANGE
orange



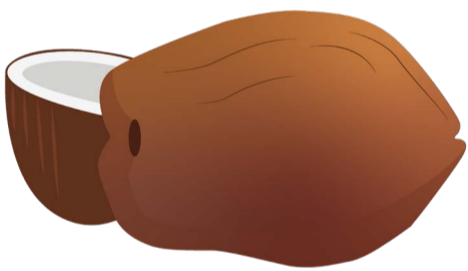
**AMANDE DE
BADAME**
tropical almond



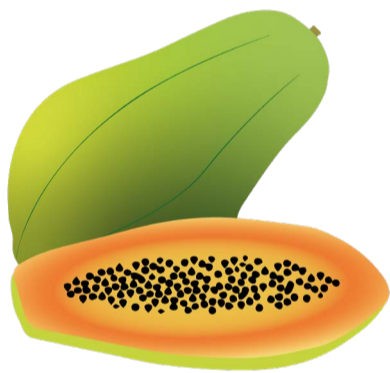
AVOCAT
avocado



**BANANE
PLANTAIN**
fehi banana



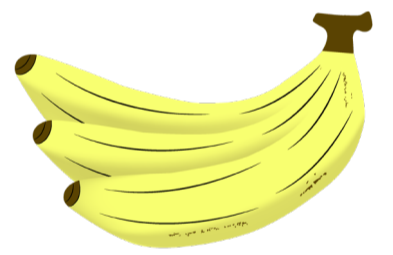
NOIX DE COCO
coconut



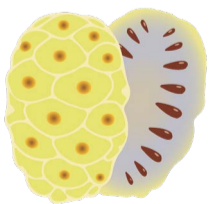
PAPAYE
papaya



**CHÂTAIGNE
TAHITIENNE**
Tahitian chestnut



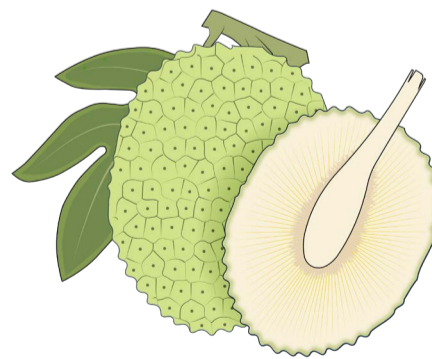
BANANE
banana



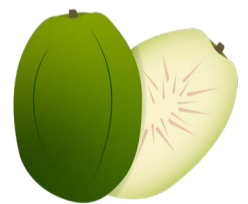
NONI
noni fruit



CITRON
lemon



**FRUIT DE
L'ARBRE À PAIN**
breadfruit



**POMME
CITÈRE**
ambarella

