

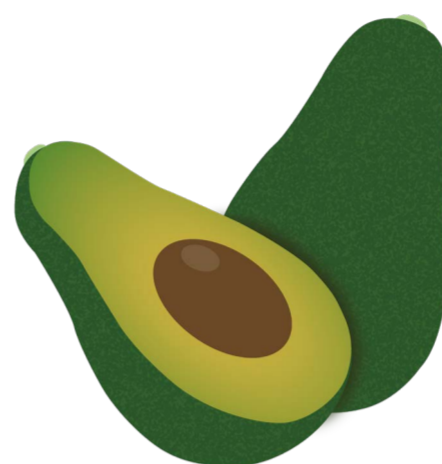
MĀ'A HOTU FRUITS (1)



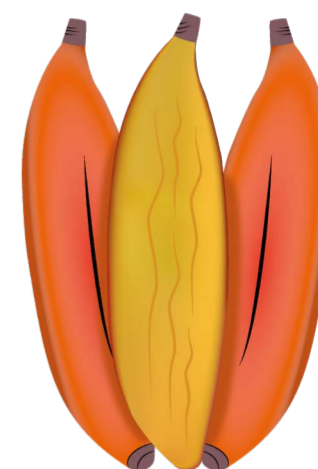
ĀNANI
orange



AUTEGA'A
tropical almond



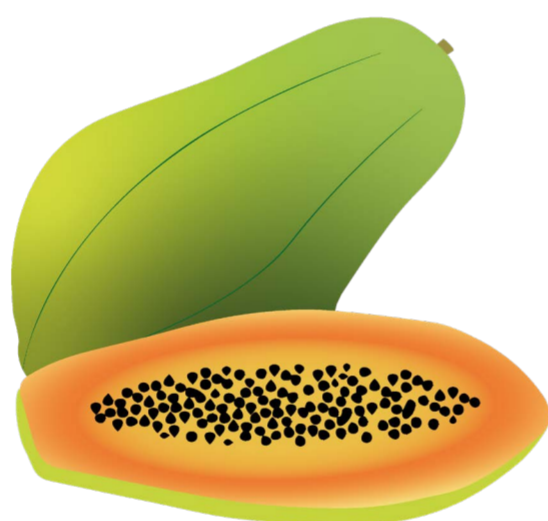
ĀVAOTA
avocado



HE'I
fehi banana



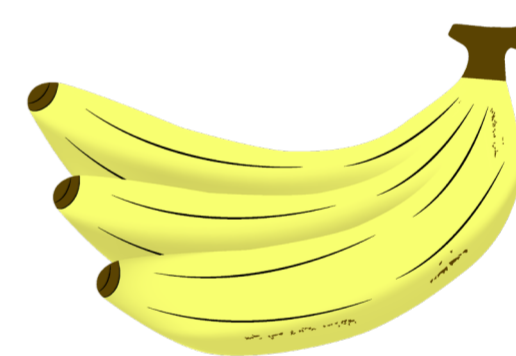
HA'AGI
coconut



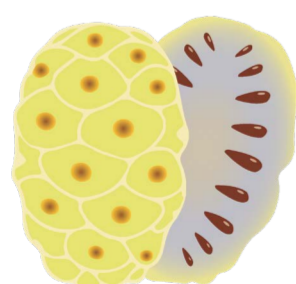
PAGĀŌA
papaya



MĀPĒ
Tahitian chestnut



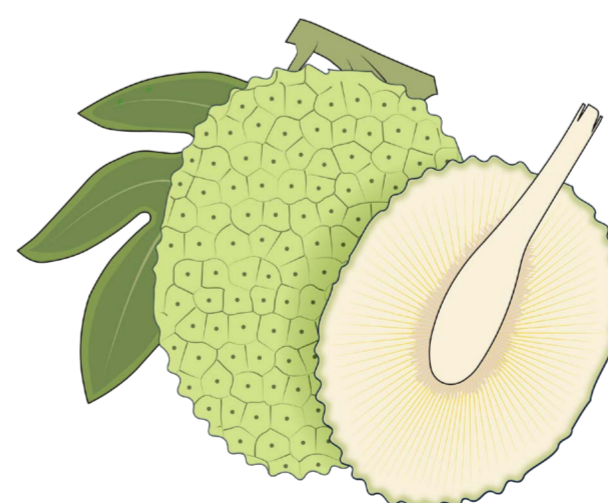
MEI'A
banana



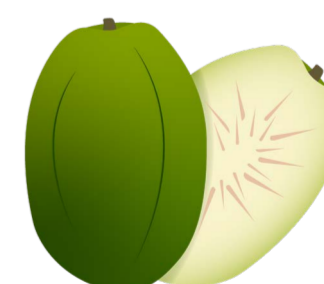
NONO
noni fruit



TĀPOGO
lemon



UGU
breadfruit



**VĪ TAHITI /
VI TAGATAGA**
ambarella

