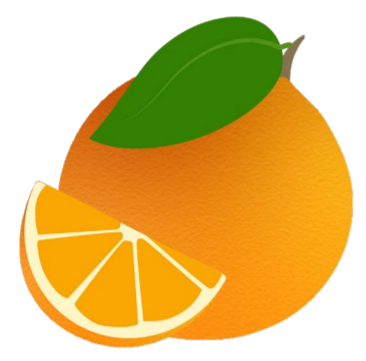


# MĀ'A 'OTU FRUITS (1)



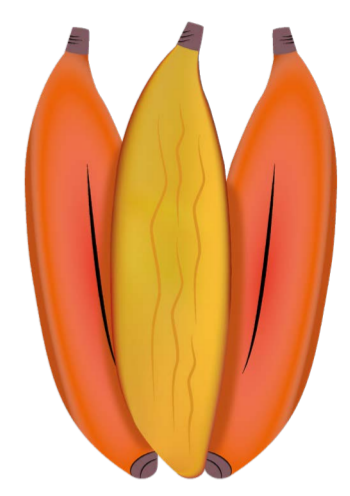
**'ĀNANI**  
*orange*



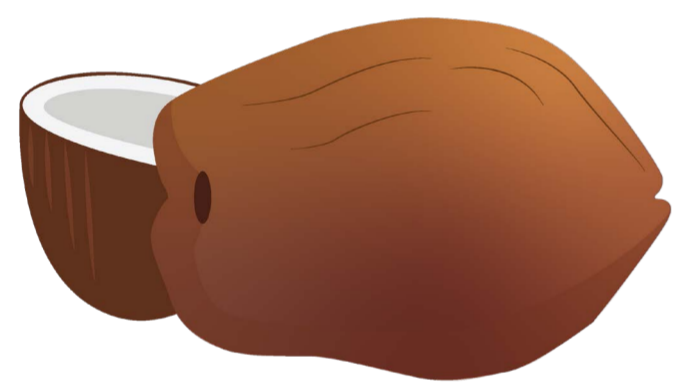
**'AUTERA'A**  
*tropical almond*



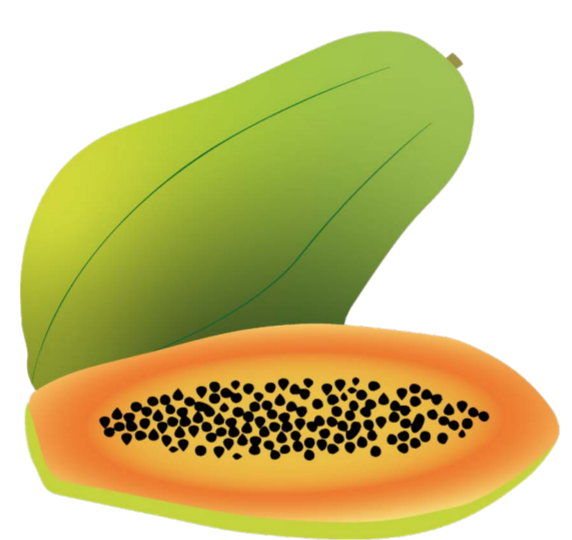
**'ĀVAOTA**  
*avocado*



**VĒ'Ī**  
*fehi banana*



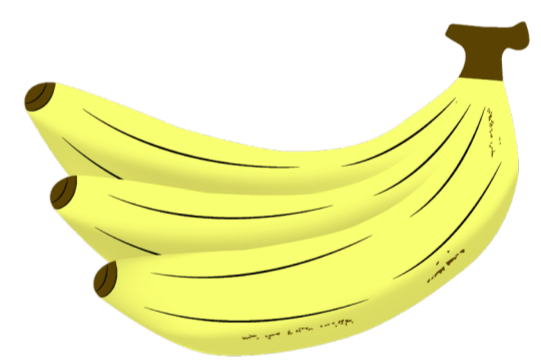
**'A'ARI**  
*coconut*



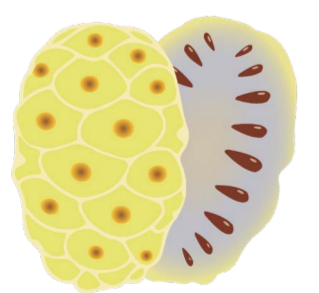
**'Ī'ITĀ / 'Ā'ITĀ**  
*papaya*



**MĀPĒ**  
*Tahitian chestnut*



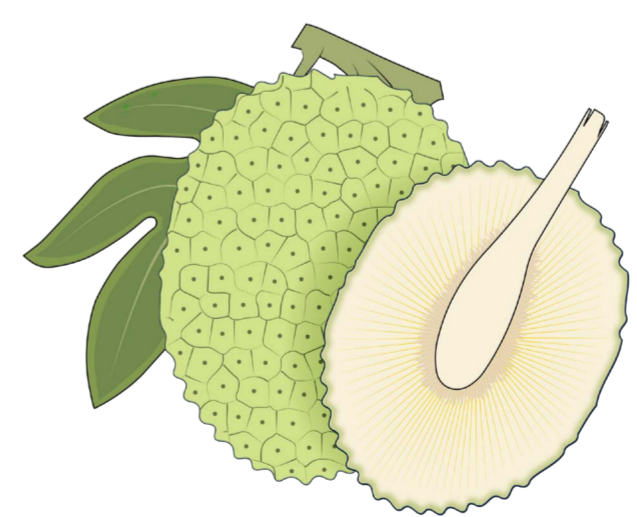
**MĪ'A**  
*banana*



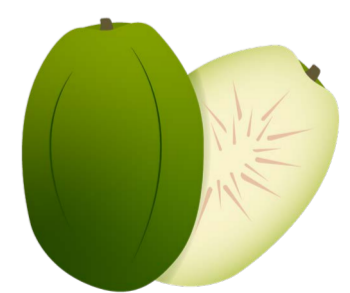
**NONO**  
*noni fruit*



**TĀPORO**  
*lemon*



**MAIORE**  
*breadfruit*



**VĪ TARATARA**  
*ambarella*

