

# TE MAU 'ĀVA'E MONTHS

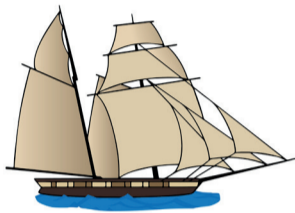
**TĒNUARE**  
*January*



**FĒPUARE**  
*February*



**MĀTI**  
*March*



**'ĒPERĒRA**  
*April*



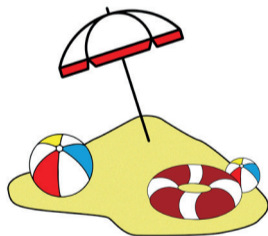
**MĒ**  
*May*



**TIUNU**  
*June*



**TIURAI**  
*July*



**'ĀTETE**  
*August*



**TETEPA**  
*September*



**'ĀTOPA**  
*October*



**NOVEMA /  
NŌEMA**  
*November*



**TĪTEMA**  
*December*

